

A Candy Store for Hot Rodders

INDUSTRIAL METAL SUPPLY

TEXT AND PHOTOS: PAUL MARTINEZ



The bad news first: IMS is presently located only in Southern California and Arizona. The good news: If you live in these areas you have access to one of the coolest stores geared towards hot rodders, fabricators, artists and DIY'ers alike.

The store is Industrial

Metal Supply that currently has a total of six locations providing every conceivable type of metal to make your next project a breeze. More on that in a moment but first we'll look at the history of this family owned business.

Founded in 1948, Norman and Sally Sherman opened IMS in Burbank, CA as a scrap and surplus company

and used the family 1947 Pontiac wagon as the delivery vehicle. Business was stable over the years and it was decided that a second facility would help service the Orange County area so their son Neil opened a second location in Irvine, CA.

IMS continued to expand and opened a San Diego branch in 1995 and then

acquired Capital Metals in Phoenix, AZ along with their 83,000 sq. ft. facility and renamed it IMS in 2006. In 2002 the original Burbank facility had been expanded several times but they needed more space so a new facility was built close by in Sun Valley with a whopping 120,000 square foot warehouse and a 14,000

A list of products include:

METALS

Aluminum
Brass
Cast Iron
Cerro Bend
Copper
Lead
Silicon Bronze
Stainless Steel
Steel
Tool Sheet
Zinc

SHAPES

Angle
Bar
Beam
Channel
Ingot
Pipe
Plate
Sheet
Shot
Tube

PROFILES

Angle
Beam
Channel
Expanded Sheet
Floor Plate
Foil
Hexagon
Ingot
Painted Sheet
Pipe
Plate
Rectangle
Rectangle Tube
Round Rod
Round Tube
Sheet
Shot
Square Bar
Square Tube
Tee

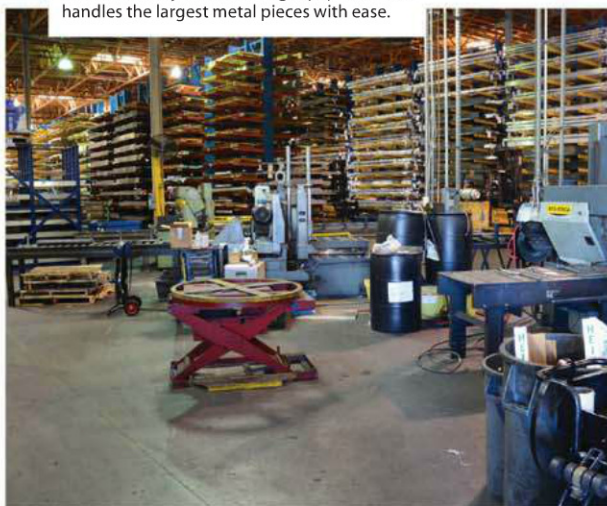
STORE LOCATIONS

Irvine, CA
Riverside, CA
San Diego, CA
Sun Valley, CA
Phoenix, AZ
Tucson, AZ



Phoenix store.

Phoenix facility offers cutting equipment that handles the largest metal pieces with ease.



For more information and store locations:
www.IndustrialMetalSupply.com

foot retail store. The latest additions include stores in Riverside, CA with over 70,000 square feet and a smaller satellite 22,500 sq. ft. facility in Tucson, AZ which is supplied daily by the Phoenix hub 100 miles north.

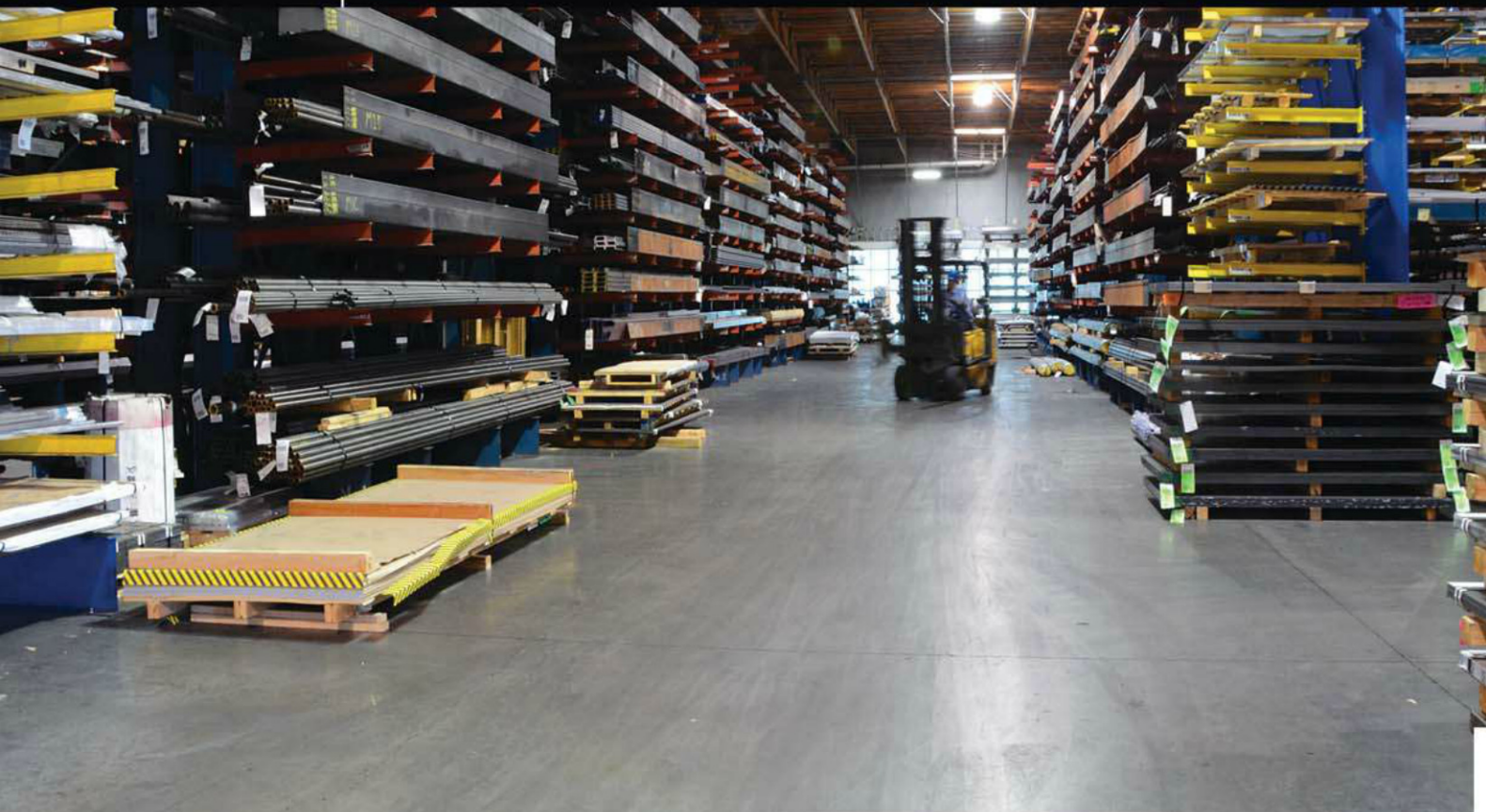
You may be asking what makes IMS so special? Customer service, pricing, no minimums, material cut to size, metal working tools and the vast variety of metal on hand.

IMS locations carry a long list of metals in various alloys, shapes, and sizes along with specialty and decorative metals.

IMS prides themselves in working with professionals and hobbyists alike and their philosophy is that no sale is too small. If you are in the area of one of the six stores (more coming soon) stop in and you'll understand why we call this the candy store for hot rodders.



IMS handles material in many sizes.



The 83,000 square foot facility houses any type of metal imaginable.



The Phoenix facility also provides material to the satellite store in Tucson.



Automated saw cuts material to the customer's specifications.



This shear handles material up to 10-feet wide.

Remnant area in Phoenix spills out into the warehouse.

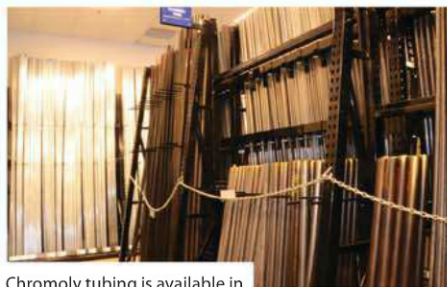


Phoenix retail area is actually smaller than the Tucson facility.

Material in the receiving area is verified before it's stored in the warehouse.



Bin after bin of neatly displayed products make it easy to find what you are looking for.



Chromoly tubing is available in full sticks or can be cut to size.



Steel rectangular tube, steel round tube, slotted angle, strut channel, and hammered steel tube are just a few of the products available at IMS.

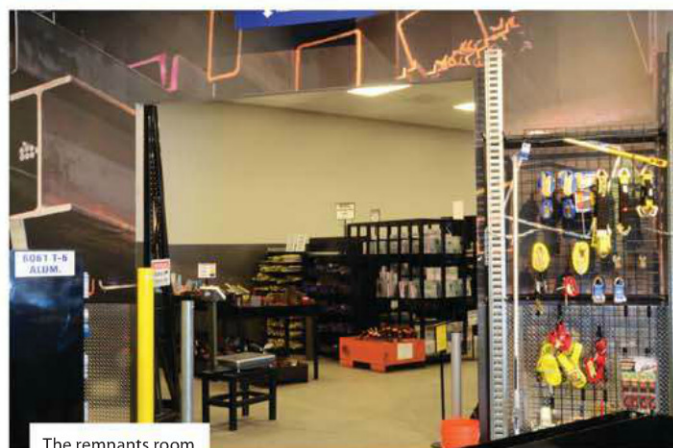
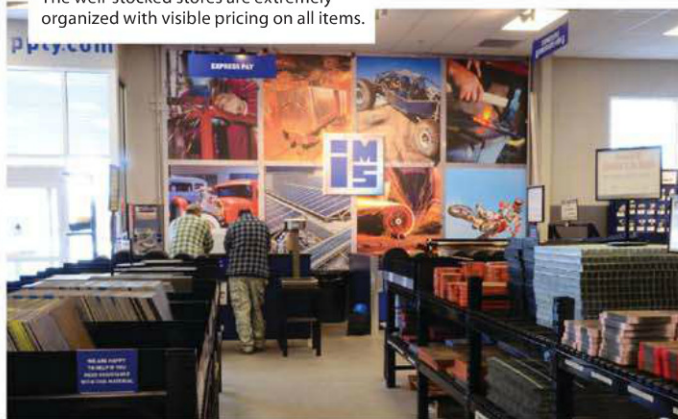


All material can be cut to your specific size or they will sell it to you in full sheets, half sheets and smaller.

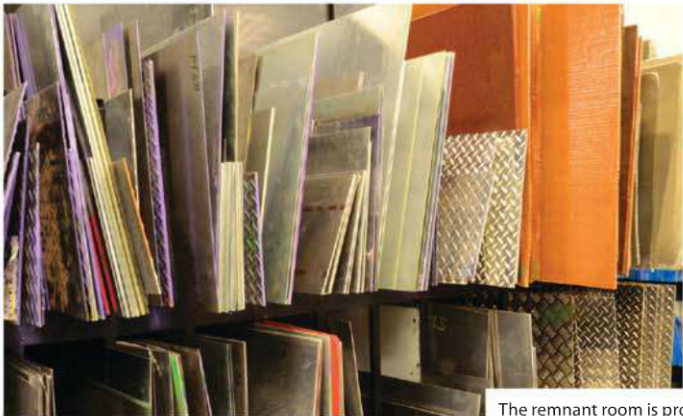


Tucson store is the new model for IMS with easy-to-navigate aisles and informative signage.

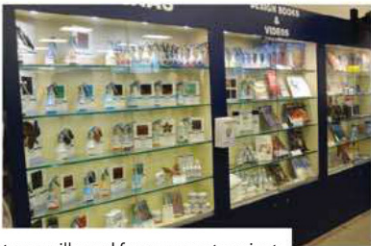
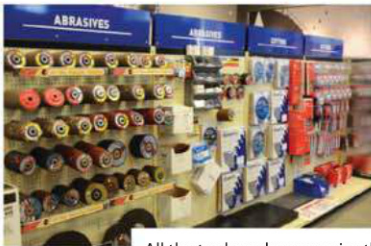
The well-stocked stores are extremely organized with visible pricing on all items.



The remnants room.



The remnant room is probably the most popular spot in the store offering big savings if you're willing to hunt.



All the tools and accessories that you will need for your next project.



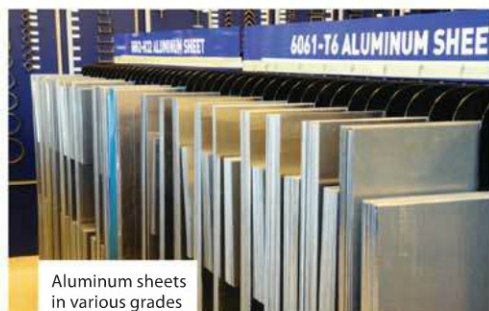
Aluminum Tee, square tube, channel and unequal angle.



IMS takes the guesswork out of shopping for metal by displaying all of the various sizes.



The smaller Tucson store still offers cutting services.



Aluminum sheets in various grades and pre-cut sizes.



Rigidized sheet is available in a variety of textures.



Pre-cut steel plate in various thicknesses and diameters.



The yellow crane lifts material on the shear.



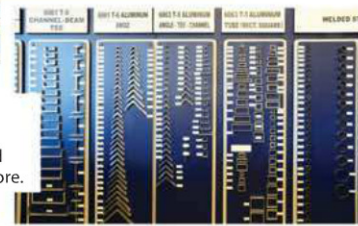
Tucson warehouse utilizes side load forklifts to make more efficient use of space. IMS plans to implement them in the other five stores this year.



This is the perfect store of the hobbyist and DIY'ers with the excellent display of product.



This is as simple as it gets to find the exact piece that you are looking for.



Our hats off to the excellent display of product. If you need metal IMS is your store.